



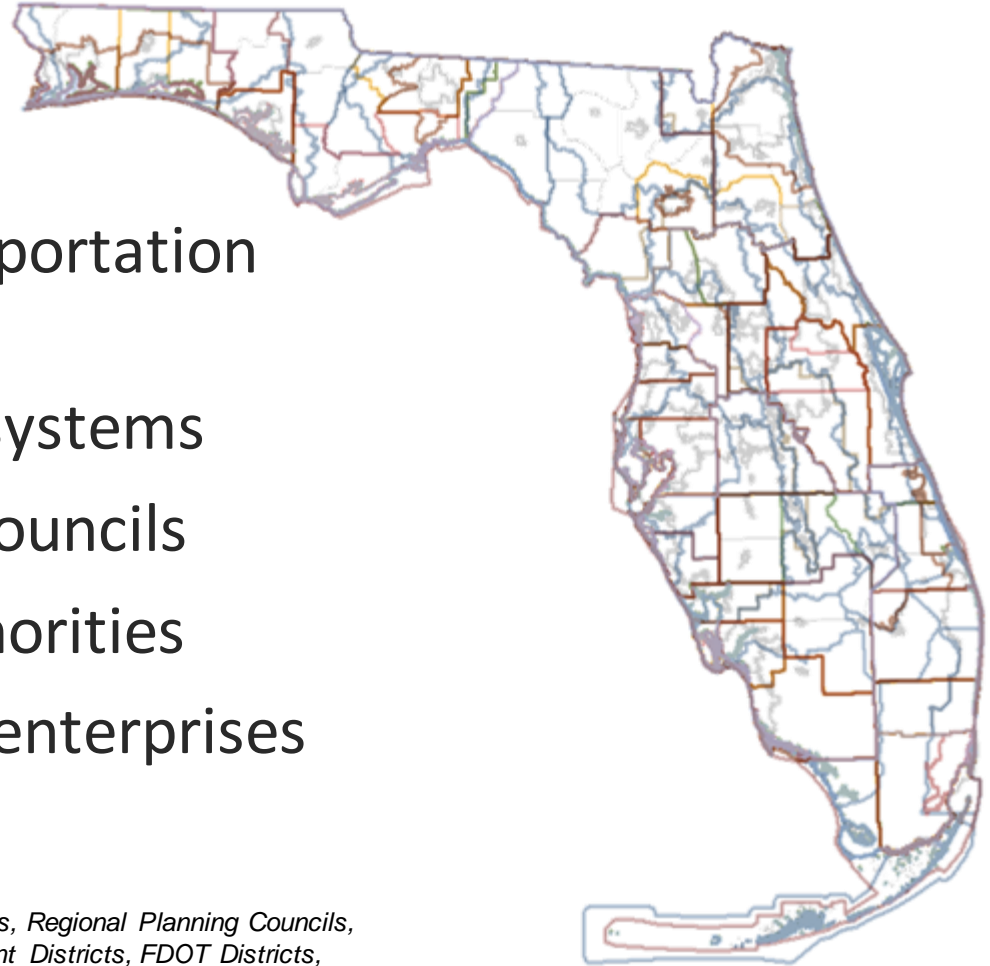
Florida Department of
TRANSPORTATION

Transportation Planning and Decision Making Structure

Huiwei Shen
Office of Policy Planning

Many Partners Involved in Transportation Decisions

- 411 Municipalities
- 67 Counties
- 27 Metropolitan/transportation planning organizations
- 28 Fixed route transit systems
- 11 Regional planning councils
- 11 Transportation authorities
- 7 FDOT districts and 2 enterprises



County and Municipal, Census Metropolitan Statistical Areas, Regional Planning Councils, FDEP Ecosystem Management Districts, Water Management Districts, FDOT Districts, Statutorily created transportation authorities, regional visioning initiatives

Central Florida (District 5) Transportation Partners

Marion	Sumter	Lake	Seminole	Orange	Osceola	Volusia	Brevard	Flagler
5	5	14	16	13	2	17	24	6
Ocala	Leesburg- Eustis- Tavares	Orlando				Palm Coast- Daytona- Port Orange	Palm Bay – Melbourne	Palm Coast- Daytona – Port Orange
	Lady Lake – The Villages			Kissimmee- St. Cloud			Sebastian	
Homosassa Springs						Deltona	Titusville	
Ocala/ Marion TPO	Lake – Sumter MPO	MetroPlan Orlando				River-to-Sea TPO	Space Coast TPO	
Central Florida MPO Alliance								
		Central Florida Expressway Authority			Osceola County Express. Authority			
SunTran		LakeXpress	Central Florida Regional Transportation Authority/LYNX			VOTRAN	Space Coast Area Transit	
			Central Florida Commuter Rail Commission/SunRail					
Withlacoochee		East Central Florida						Northeast Florida
Number of Cities		MPO/TPO		Fixed Route Transit System		MPO Partnership		
2010 Census Urbanized Areas		Transportation Authority		Regional Planning Council		Multi-Purpose Entity		



21st Century Governance Model

- Collaborative and sustained leadership from public, private, civic sectors
- Clearly defined roles
- Inclusive, accountable, cost effective, timely decision making processes
- Flexible, responsive plans and programs
- Integration of transportation with land use, economic, environmental, community, other decisions
- Defragmentation of decision making using logical, consistent boundaries at state, regional, local levels



Potential Regional Implementation Entities

- **Central Florida Commuter Rail Commission**
- **Central Florida Congress of Regional Leaders**
- **Central Florida Expressway Authority**
- **Central Florida MPO Alliance**
- **Central Florida Regional Transportation Authority**
- **East Central Florida Regional Planning Council**
- **Florida DOT District 5**
- **Florida's Turnpike Enterprise**



Florida Department of
TRANSPORTATION

Huiwei Shen
Office of Policy Planning
Florida Department of Transportation
jim.m.wood@dot.state.fl.us
850-414-4814