

Alternatives Alignment Research Tool

▶ What It Does

- » Identifies corridor of least impact/shortest distance
- » Quantifies corridor impacts
- » Compares multiple corridor scenarios








▶ How It Works

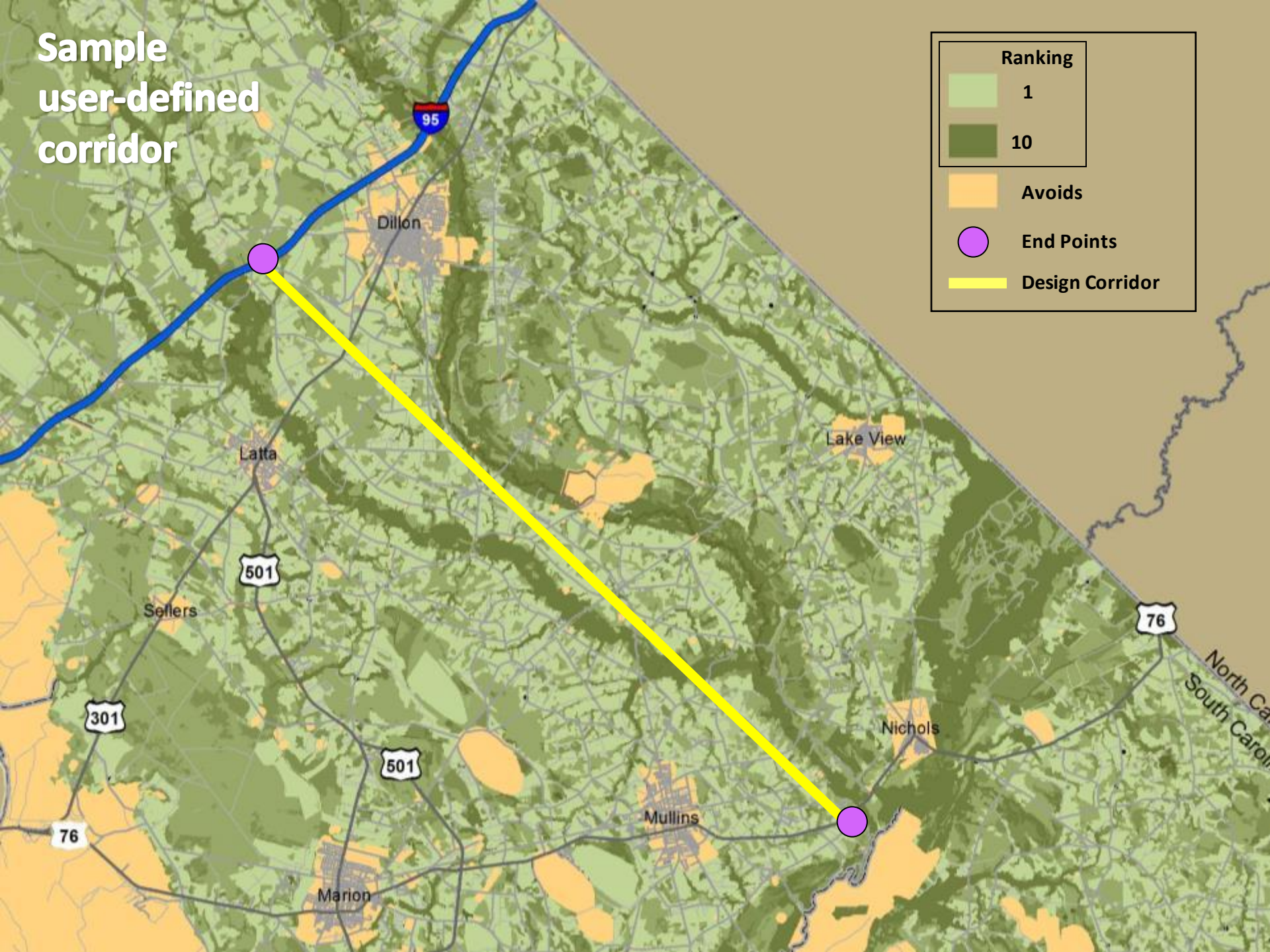
- » Uses standard GIS data (natural resources, cultural and historic resources, land use, existing infrastructure, etc.)
- » Allows user to rank key resources and identify must avoid areas
- » Allows user to establish start, end, way points



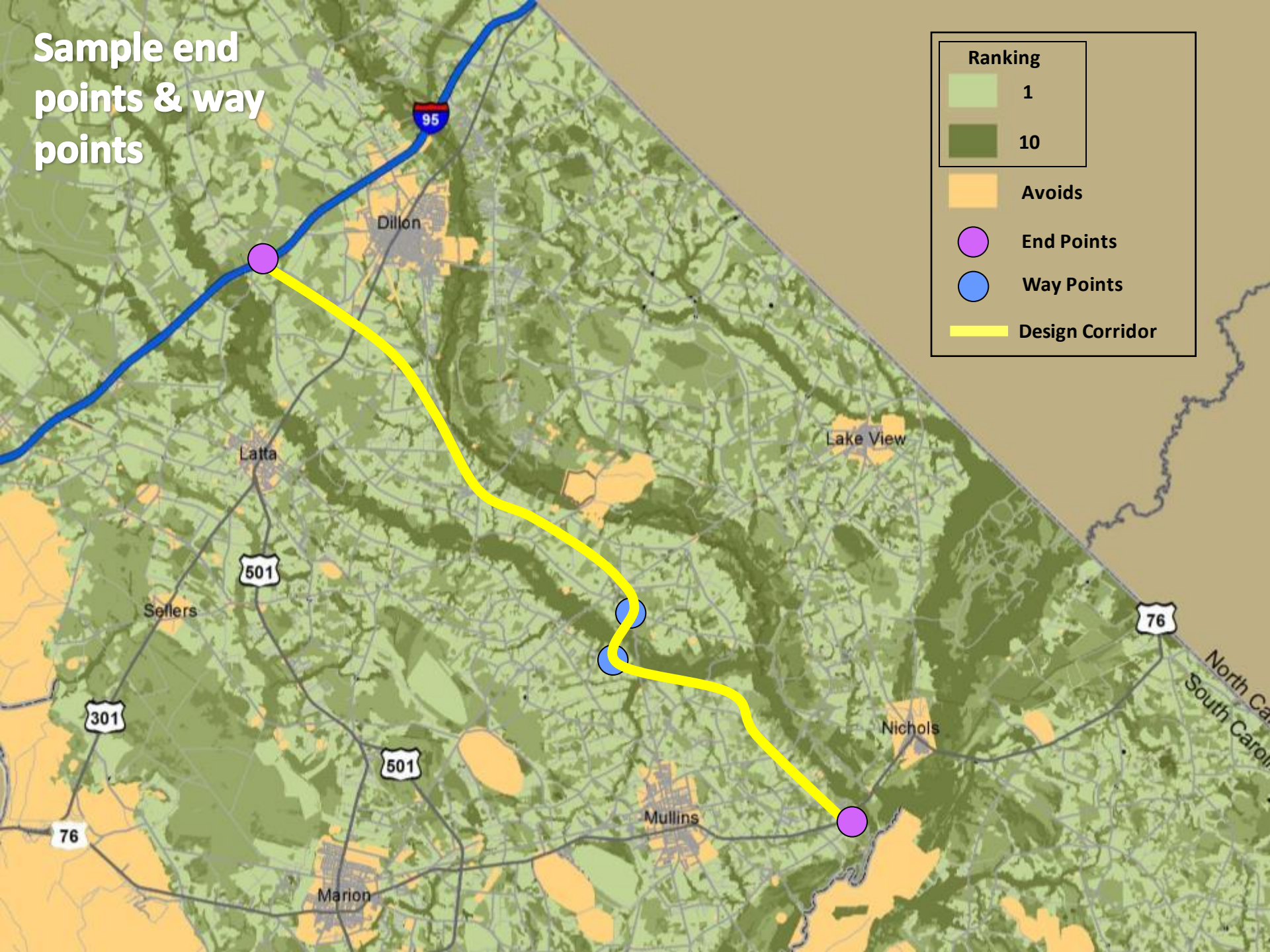
Sample user-defined corridor

Ranking	
	1
	10

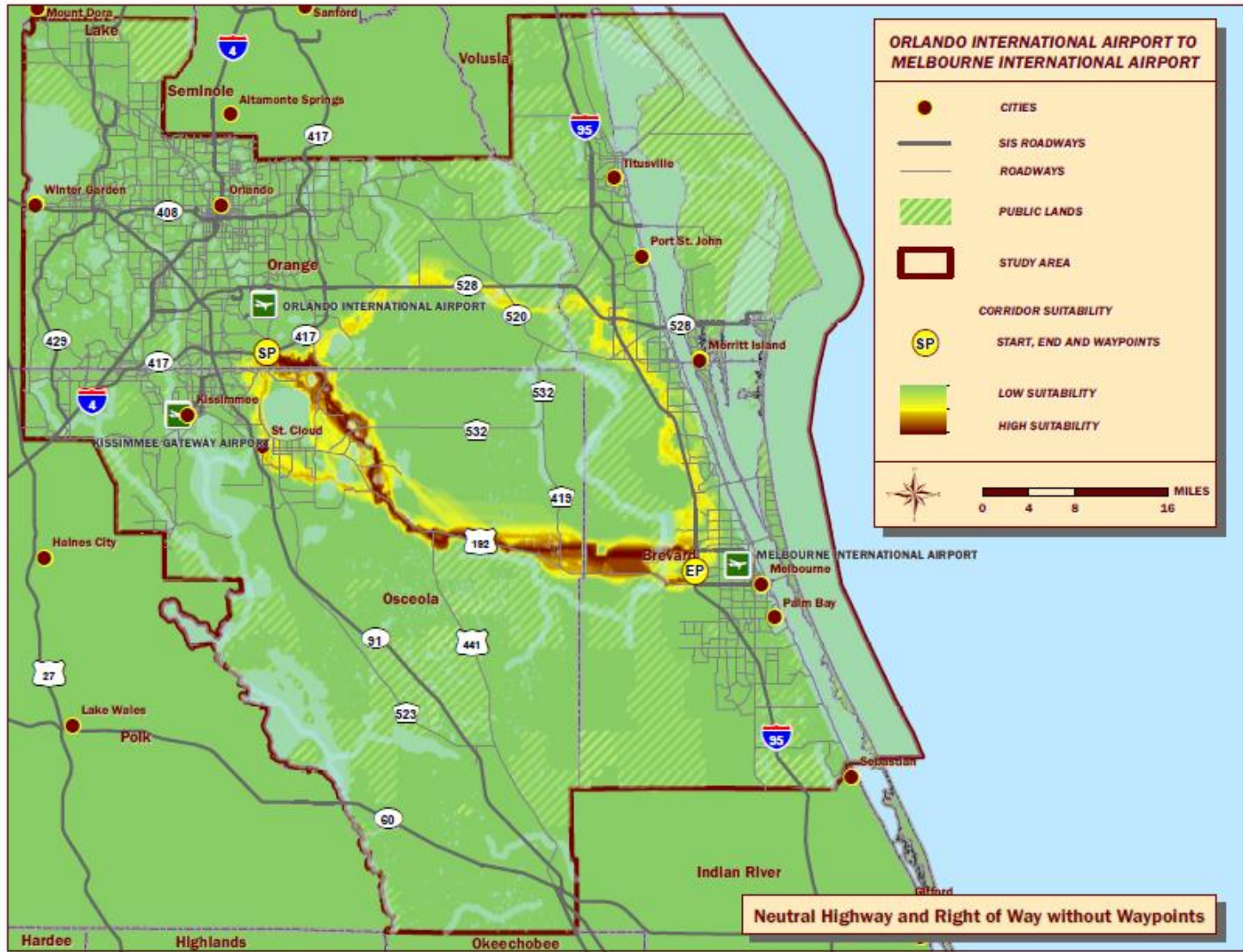
	Avoids
	End Points
	Design Corridor



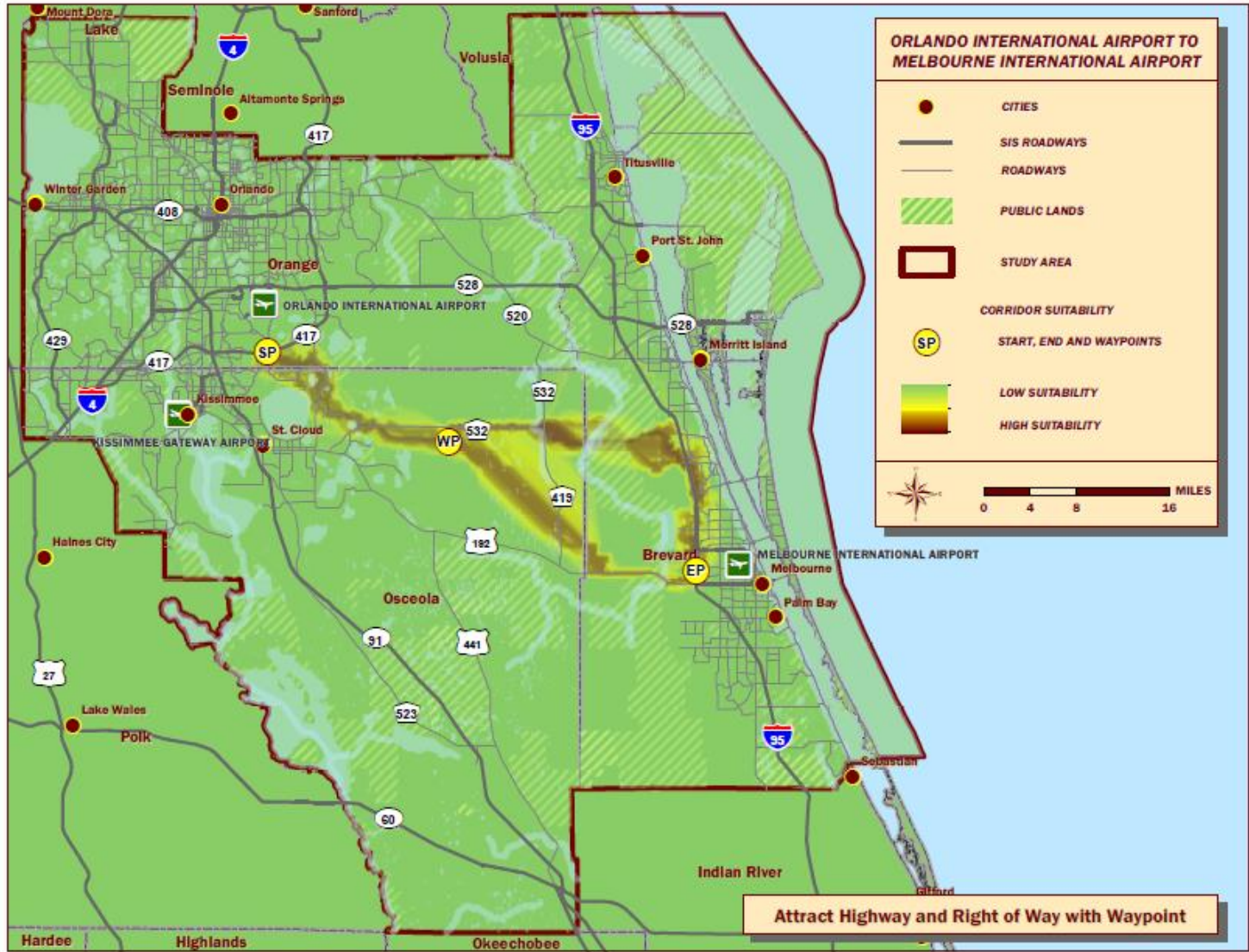
Sample end points & way points



Orlando Airport to Melbourne Airport Path of Least Impact (DRAFT)



Orlando Airport to Melbourne Airport Preference for Existing Right of Way with Waypoint (DRAFT)



Orlando Airport to Melbourne Airport Path of Least Impact with Waypoint (DRAFT)

