

Panel Discussion: Demographic Changes and Community Values

BEBR Population Projections for Brevard, Orange, and Osceola Counties, 2015–2040

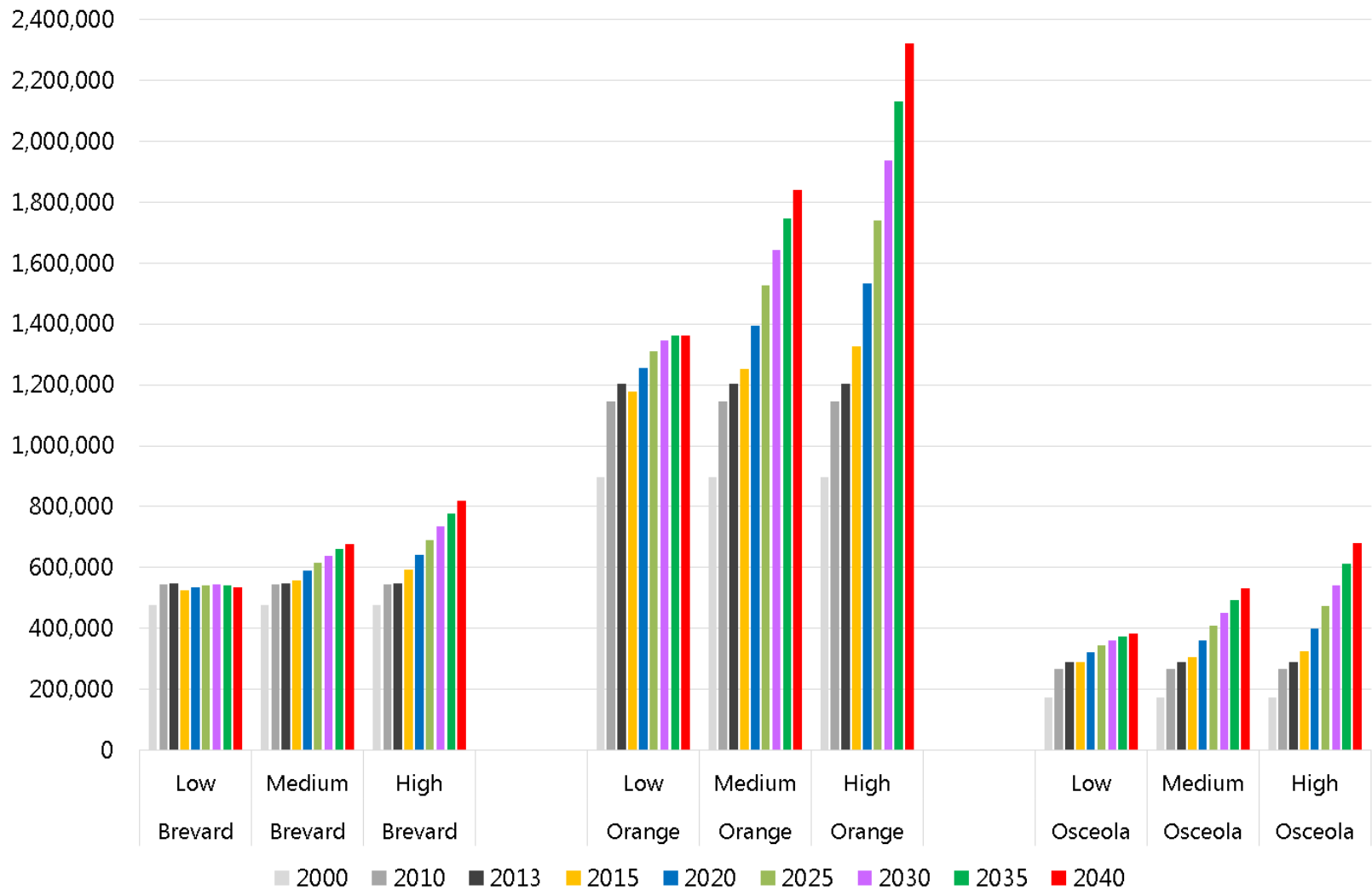
Stefan Rayer

Bureau of Economic and Business Research
University of Florida

East Central Florida Corridor Task Force Meeting

University of Florida/Osceola County Extension Services Building at
Heritage Park, Kissimmee, Florida
August 22, 2014

BEBR Low, Medium, and High Projections for 2015-2040, with Census Counts for 2000 and 2010, and Estimates for 2013 (Brevard, Orange, and Osceola Counties)



County/ State	Series	Census Counts ¹		Estimates ²	Projections ²					
		2000	2010	2013	2015	2020	2025	2030	2035	2040
Brevard	Low				525,000	536,300	542,500	543,800	541,200	535,200
Brevard	Medium	476,230	543,376	548,424	558,500	589,300	616,400	639,800	660,000	677,500
Brevard	High				592,000	642,400	690,400	735,700	778,800	819,700
Orange	Low				1,176,600	1,255,300	1,311,600	1,345,800	1,362,100	1,362,100
Orange	Medium	896,344	1,145,956	1,202,978	1,251,700	1,394,800	1,525,100	1,641,200	1,746,300	1,840,700
Orange	High				1,326,800	1,534,300	1,738,600	1,936,600	2,130,500	2,319,300
Osceola	Low				288,500	320,800	343,700	362,100	375,300	383,400
Osceola	Medium	172,493	268,685	288,361	306,900	360,500	409,100	452,700	493,800	532,500
Osceola	High				325,300	400,100	474,600	543,200	612,300	681,600
Florida	Low				19,498,300	20,317,900	21,081,200	21,773,800	22,366,600	22,895,900
Florida	Medium	15,982,378	18,801,310	19,259,543	19,747,200	21,149,700	22,443,000	23,609,000	24,654,000	25,603,600
Florida	High				20,094,500	21,977,200	23,782,800	25,458,500	26,995,200	28,436,700

Sources:

¹ U.S. Census Bureau, 2000 & 2010 Censuses

² Projections of Florida Population by County, 2015-2040, with Estimates for 2013. Bureau of Economic and Business Research (BEBR), University of Florida

County/ State	Race/Ethnicity	Census/Estimates ¹		Projections ²		
		2000	2010	2020	2030	2040
Brevard	Non-Hispanic White	403,553	428,550	444,592	465,702	481,804
Brevard	Non-Hispanic Black	40,645	55,881	66,726	77,768	85,923
Brevard	Non-Hispanic Other	10,062	15,002	17,966	20,818	23,003
Brevard	Hispanic	21,970	43,943	60,049	75,463	86,721
Brevard	Total	476,230	543,376	589,333	639,751	677,451
Orange	Non-Hispanic White	526,006	540,268	557,462	576,341	592,125
Orange	Non-Hispanic Black	165,407	231,598	305,389	378,733	437,633
Orange	Non-Hispanic Other	36,570	65,846	87,228	107,643	124,389
Orange	Hispanic	168,361	308,244	444,735	578,456	686,548
Orange	Total	896,344	1,145,956	1,394,814	1,641,173	1,840,695
Osceola	Non-Hispanic White	104,852	111,133	119,724	129,810	138,315
Osceola	Non-Hispanic Black	11,932	26,252	38,866	51,423	62,275
Osceola	Non-Hispanic Other	4,982	9,154	13,627	17,916	21,709
Osceola	Hispanic	50,727	122,146	188,261	253,502	310,173
Osceola	Total	172,493	268,685	360,478	452,651	532,472
Florida	Non-Hispanic White	10,591,456	11,065,171	11,562,634	12,190,332	12,712,962
Florida	Non-Hispanic Black	2,358,124	2,950,092	3,448,409	3,956,785	4,368,260
Florida	Non-Hispanic Other	350,052	562,241	677,393	788,701	881,802
Florida	Hispanic	2,682,746	4,223,806	5,461,261	6,673,154	7,640,553
Florida	Total	15,982,378	18,801,310	21,149,697	23,608,972	25,603,577

Sources:

¹ National Center for Health Statistics, April 1, 2000 & 2010 Bridged-Race Population Estimates

² BEBR Population Projections by Age, Sex, Race, and Hispanic Origin for Florida and Its Counties, 2015-2040, With Estimates for 2013

County/ State	Race/Ethnicity	% Growth				% Distribution				
		2000-2010	2010-2020	2020-2030	2030-2040	Census/Est. ¹		Projections ²		
						2000	2010	2020	2030	2040
Brevard	Non-Hispanic White	6.2	3.7	4.7	3.5	84.7	78.9	75.4	72.8	71.1
Brevard	Non-Hispanic Black	37.5	19.4	16.5	10.5	8.5	10.3	11.3	12.2	12.7
Brevard	Non-Hispanic Other	49.1	19.8	15.9	10.5	2.1	2.8	3.0	3.3	3.4
Brevard	Hispanic	100.0	36.7	25.7	14.9	4.6	8.1	10.2	11.8	12.8
Brevard	Total	14.1	8.5	8.6	5.9	100	100	100	100	100
Orange	Non-Hispanic White	2.7	3.2	3.4	2.7	58.7	47.1	40.0	35.1	32.2
Orange	Non-Hispanic Black	40.0	31.9	24.0	15.6	18.5	20.2	21.9	23.1	23.8
Orange	Non-Hispanic Other	80.1	32.5	23.4	15.6	4.1	5.7	6.3	6.6	6.8
Orange	Hispanic	83.1	44.3	30.1	18.7	18.8	26.9	31.9	35.2	37.3
Orange	Total	27.8	21.7	17.7	12.2	100	100	100	100	100
Osceola	Non-Hispanic White	6.0	7.7	8.4	6.6	60.8	41.4	33.2	28.7	26.0
Osceola	Non-Hispanic Black	120.0	48.0	32.3	21.1	6.9	9.8	10.8	11.4	11.7
Osceola	Non-Hispanic Other	83.7	48.9	31.5	21.2	2.9	3.4	3.8	4.0	4.1
Osceola	Hispanic	140.8	54.1	34.7	22.4	29.4	45.5	52.2	56.0	58.3
Osceola	Total	55.8	34.2	25.6	17.6	100	100	100	100	100
Florida	Non-Hispanic White	4.5	4.5	5.4	4.3	66.3	58.9	54.7	51.6	49.7
Florida	Non-Hispanic Black	25.1	16.9	14.7	10.4	14.8	15.7	16.3	16.8	17.1
Florida	Non-Hispanic Other	60.6	20.5	16.4	11.8	2.2	3.0	3.2	3.3	3.4
Florida	Hispanic	57.4	29.3	22.2	14.5	16.8	22.5	25.8	28.3	29.8
Florida	Total	17.6	12.5	11.6	8.4	100	100	100	100	100

Sources:

¹ National Center for Health Statistics, April 1, 2000 & 2010 Bridged-Race Population Estimates

² BEBR Population Projections by Age, Sex, Race, and Hispanic Origin for Florida and Its Counties, 2015-2040, With Estimates for 2013

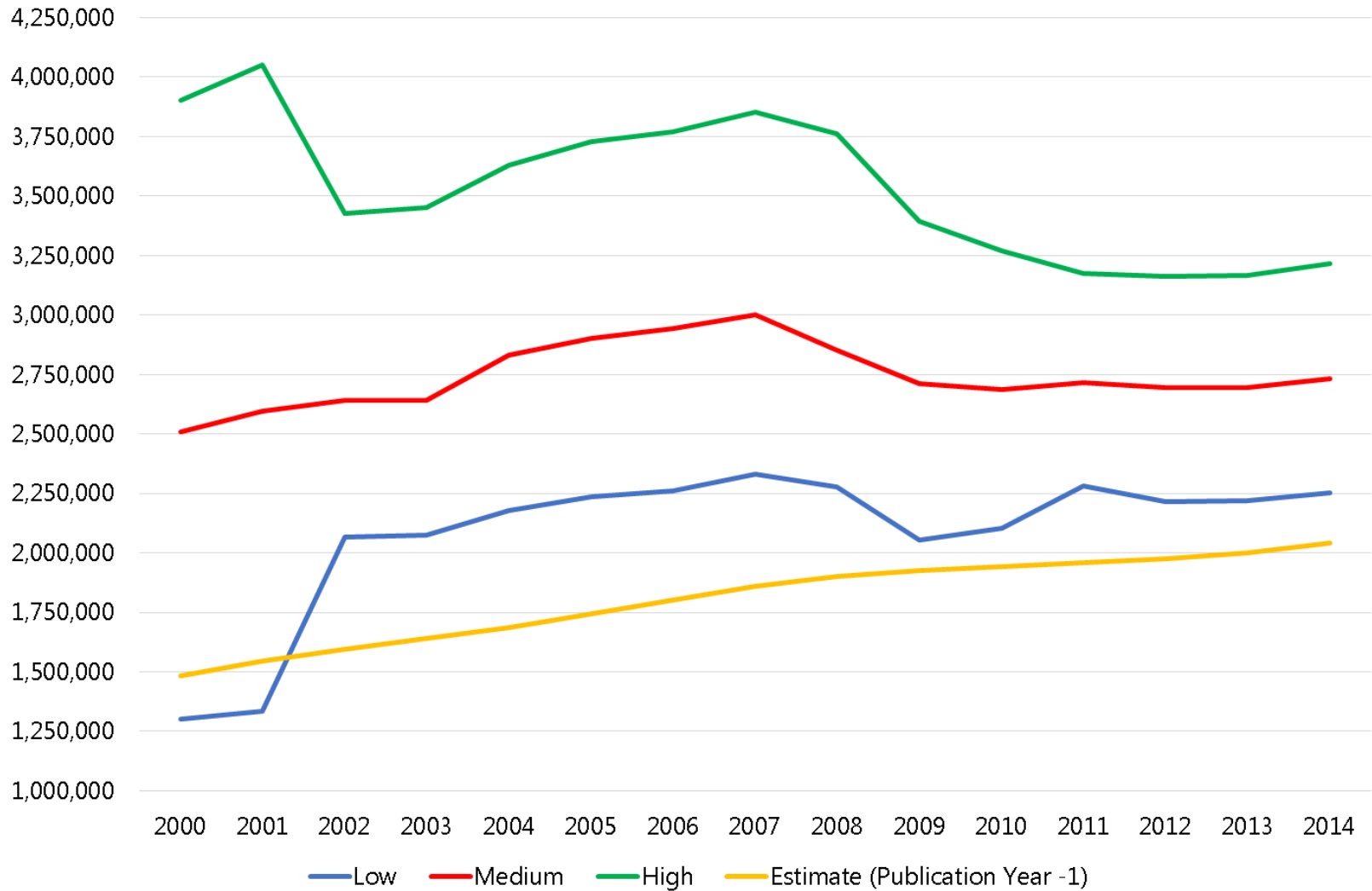
County/ State	Age	% Distribution																			
		Total Population					Non-Hispanic White					Non-Hispanic Black					Hispanic				
		Census/Est. ¹		Projections ²			Census/Est. ¹		Projections ²			Census/Est. ¹		Projections ²			Census/Est. ¹		Projections ²		
2000	2010	2020	2030	2040	2000	2010	2020	2030	2040	2000	2010	2020	2030	2040	2000	2010	2020	2030	2040		
Brevard	< 18	22.0	19.8	18.3	17.8	17.9	20.3	17.4	15.5	14.8	14.8	33.4	29.9	26.9	24.5	24.2	30.7	30.6	28.6	27.3	27.2
Brevard	18-64	58.1	59.8	57.9	52.3	52.6	57.9	59.8	57.4	50.4	50.9	56.8	58.3	58.7	57.3	57.1	59.6	59.1	59.5	57.5	56.8
Brevard	65+	19.9	20.4	23.7	29.9	29.5	21.8	22.9	27.1	34.8	34.3	9.8	11.8	14.4	18.1	18.7	9.7	10.3	11.9	15.2	16.0
Orange	< 18	25.3	23.6	23.1	23.0	22.7	20.8	18.3	17.6	17.2	17.0	34.2	29.8	27.6	26.0	25.2	30.6	28.5	26.9	26.2	25.6
Orange	18-64	64.7	66.7	65.1	62.8	62.6	66.4	69.2	66.7	63.5	64.0	59.6	63.2	63.0	61.8	61.7	63.2	64.4	64.5	62.9	62.1
Orange	65+	10.0	9.7	11.7	14.2	14.7	12.8	12.5	15.7	19.3	19.0	6.2	7.0	9.4	12.2	13.1	6.2	7.1	8.7	10.9	12.2
Osceola	< 18	26.8	26.2	24.2	23.2	22.9	23.3	20.7	18.7	17.4	16.9	33.9	30.2	26.1	24.1	23.9	32.4	30.5	27.4	26.0	25.4
Osceola	18-64	61.8	62.8	62.4	60.0	58.6	62.3	64.1	61.5	57.0	55.7	57.4	60.7	62.2	60.4	59.1	61.0	61.7	62.8	61.4	59.7
Osceola	65+	11.4	11.0	13.4	16.8	18.5	14.4	15.2	19.8	25.6	27.4	8.6	9.0	11.7	15.4	17.0	6.5	7.8	9.8	12.6	14.9
Florida	< 18	22.8	21.3	20.3	19.8	19.8	19.5	17.2	15.9	15.2	15.1	33.5	29.3	27.1	25.4	24.7	26.2	26.2	25.1	24.3	24.2
Florida	18-64	59.6	61.4	59.3	56.2	55.9	58.4	59.9	56.4	51.9	51.9	59.2	62.4	61.5	59.7	59.4	63.4	63.5	63.3	61.4	60.0
Florida	65+	17.6	17.3	20.4	24.0	24.3	22.1	22.8	27.7	32.9	32.9	7.2	8.3	11.4	14.9	15.9	10.4	10.3	11.6	14.3	15.9

Sources:

¹ National Center for Health Statistics, April 1, 2000 & 2010 Bridged-Race Population Estimates

² BEBR Population Projections by Age, Sex, Race, and Hispanic Origin for Florida and Its Counties, 2015-2040, With Estimates for 2013

BEBR Population Projections for 2030 by Series and Publication Year
 (Aggregate of Brevard, Orange, and Osceola Counties)



BEBR population estimates and projections can be accessed at
<http://www.bebr.ufl.edu/population>