

Overview of Conservation Initiatives in the East Central Florida Study Area

presented to

East Central Florida Corridor Task Force

presented by

Jean Scott

Strategies for Livable Communities/ SLC, LLC

June 5, 2014

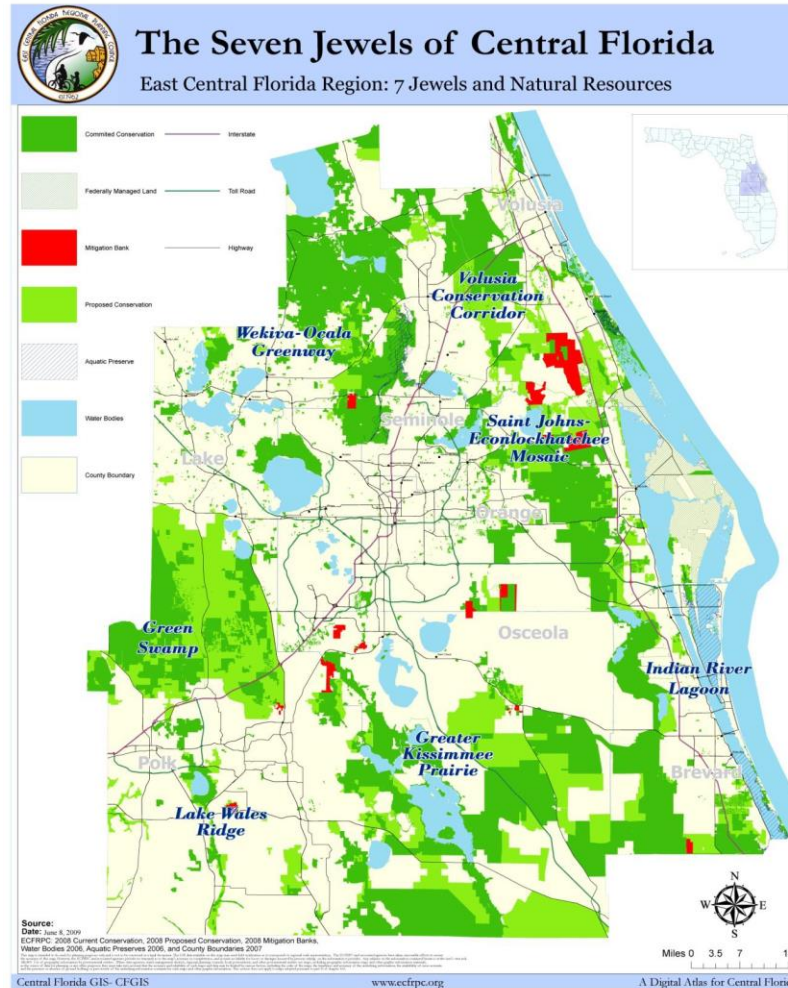


Inventory of Conservation Initiatives

- Undertaken to identify the conservation and ecosystem planning initiatives that relate to or are in the East Central Florida Study Area
- Highlights the study area's environmental significance



The Seven Jewels of Central Florida



Inventory of Conservation Initiatives

Regional/Local

- Seven Jewels of Central Florida
- ECFRPC Natural Resources of Regional Significance
- South Florida Water Management District
- St. Johns River Water Management District
- The Nature Conservancy's Northern Everglades Initiative
- Central Florida Water Initiative
- Local examples
Brevard, Orange, and Osceola counties
Cities of Kissimmee, Melbourne, and Orlando



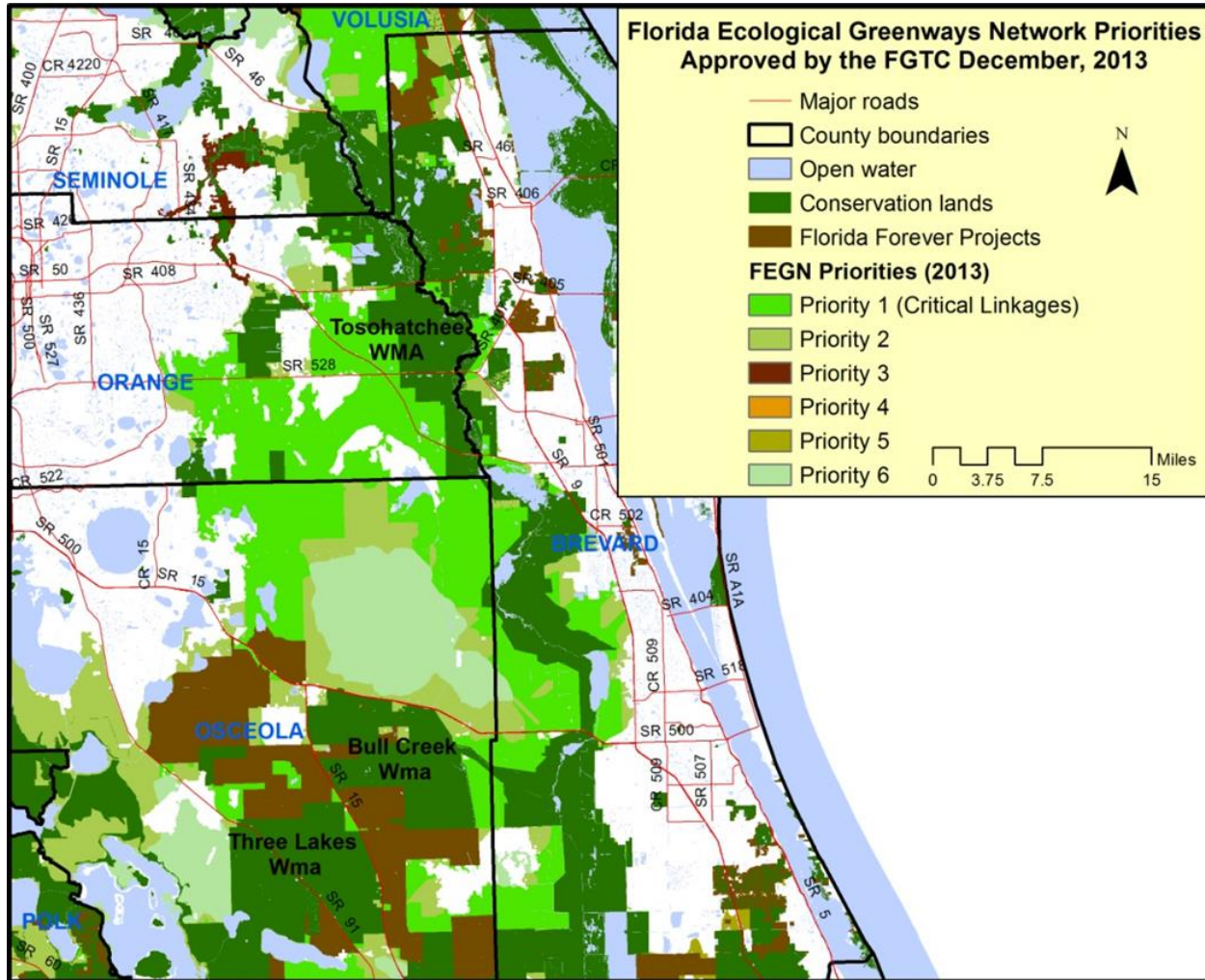
Inventory of Conservation Initiatives

State

- Critical Lands and Waters Identification Project (CLIP)
- DACS, Florida Forest Service
- DEP Florida Ecological Network
- FWC Cooperative Conservation Blueprint
- FWC Wildlife Action Plan
- Florida Wildlife Corridor



Critical Florida Greenway Network Linkages in the Study Area



Inventory of Conservation Initiatives

Federal

- USDA, Natural Resources Conservation Service
- USFS Florida National Scenic Trail
- USFWS Everglades Headwaters National Wildlife Refuge and Conservation Area
- USFWS Peninsular Florida Landscape Conservation Cooperative



Inventory of Conservation Initiatives

- **Initiatives recognizing the study area as a priority:**
 - » Florida Ecological Greenways Network
 - » CLIP 2.0 aggregated priorities
 - » Cooperative Conservation Blueprint
 - » Florida Wildlife Corridor
 - » U.S. Forest Service Florida National Scenic Trail
 - » U.S. Fish and Wildlife Service's Everglades Headwaters National Wildlife Refuge and Conservation Area
 - » Peninsular Florida Landscape Conservation Cooperative



Inventory of Conservation Initiatives

Observations and Common Themes

- **Habitat for listed species**
 - » Providing habitat in the study area and connecting that habitat to the rest of the state to facilitate wildlife movement
- **Managing, restoring, protecting water resources**
 - » Upper St. Johns River Basin
 - » Econlockhatchee River Basin
 - » Indian River Lagoon
 - » Everglades Restoration
- **Maintaining, restoring, enhancing natural systems**
 - » Provide connectivity to help keep the region's ecosystems healthy and functioning



Discussion

